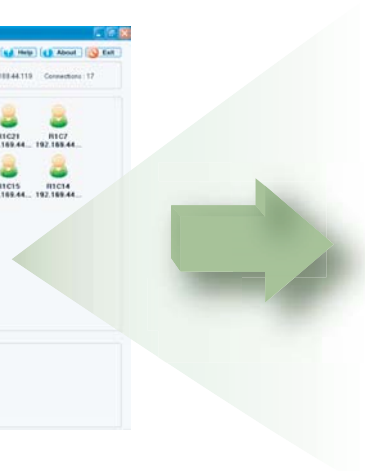
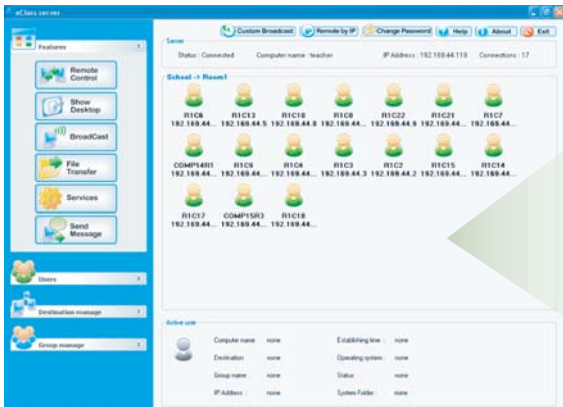


By using a single workstation, a teacher can manage a class of networked PC's using this virtual classroom environment.



Control

Monitor

ePermission

Communicate



Easy to Use *

Multi-Language Support *

Automated update for FREE *

Try eClass 30-days for FREE *

Assist and monitor your students from your screen



Remote Control

- * Take control of a PC when the student really needs help.
- * Lock or unlock any PC's, keyboard, mouse and screen.
- * Shutdown stations remotely with one click.
- * Execute and run programs on remote stations.



Monitor

- * Monitor several students at the same time as they work.
- * See who is connected or disconnected, and retrieve station profile.

Communicate

- * Communicate with one or all students through text messaging, audio or even webcam.
- * Send or grab files from any station.
- * Broadcast selected screens to any or all PC's.
- * Broadcast streaming video to all or selected PC's.

Management

- * Manage multiple networks.
- * Divide a class into groups and manage each group individually.

ePermission

- * Allows the teacher to permit or block programs execution. (ex. disable ICQ, IE, MSN Messenger).

Assist and monitor your students from your screen

